



CHO

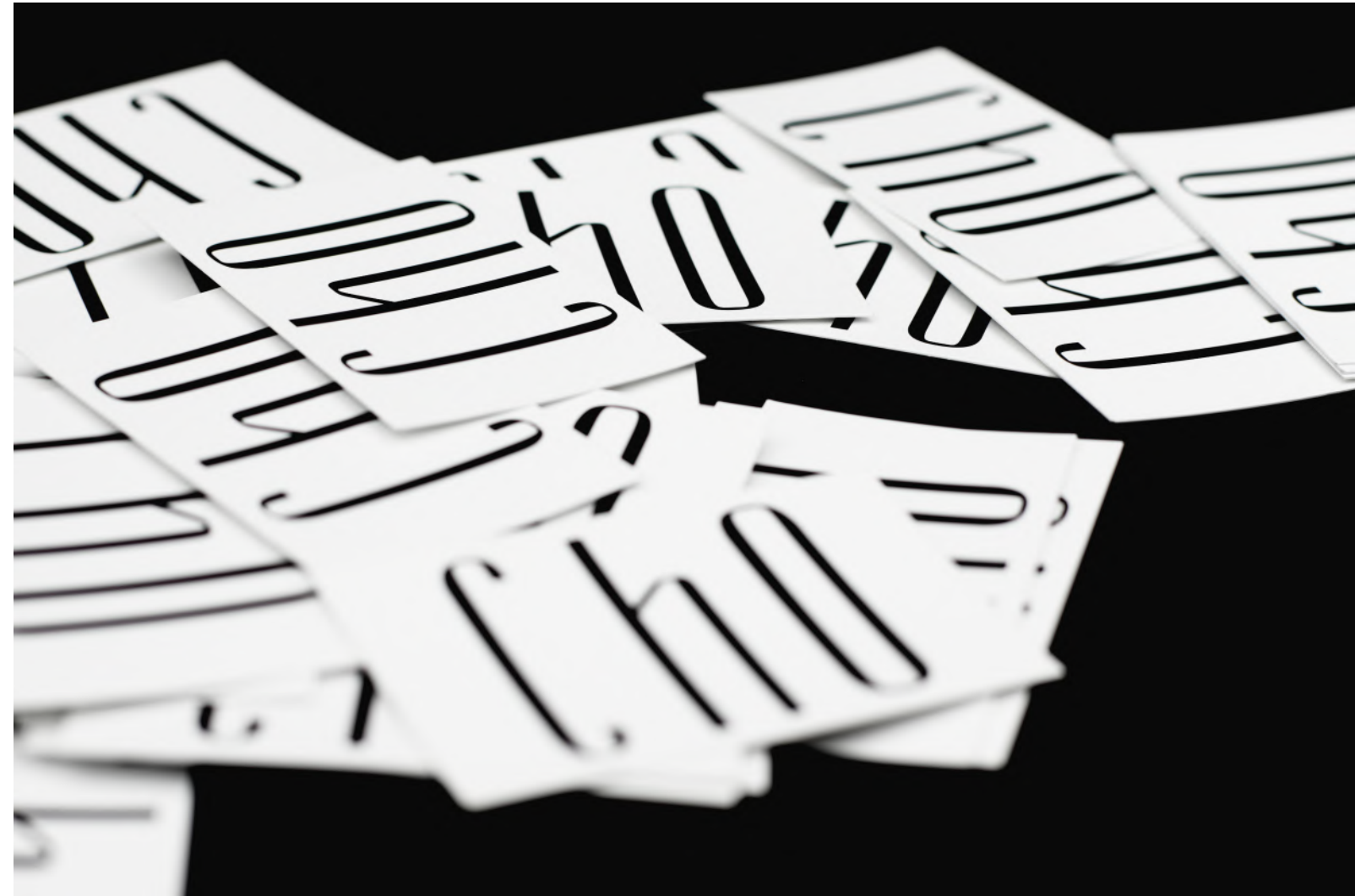
REFLECT THE LIGHT

Cho is a jewelry label
founded by Tanja Cho in Paris in 2019
with the ambition to reveal the light
inside the wearer.

We offer women and men over the world
supremely lightweight,
modern and hand-finished jewels
to reasonable prices.

All objects are sustainably Made in France
from genuine materials.

A thoughtful combination of sterling silver 925,
plated with the precious metal Rhodium,
both partly recycled and Fairtrade certified.



UNISEX

LIGHTWEIGHT

LIGHT-REFLECTIVE

THE CHO ESSENTIALS COLLECTION

consists of 4 classical rings and 9 earrings, in a timeless yet unique design and size.

Inspired by the fundamental forms, Line and Circle, the unisex rings are made to be worn individually or stacked.
The earrings are wearable as single piece, paired to a symmetrical duo or composed as asymmetrical pair.

Through hand-finished matte and mirror-polished surfaces, the jewels fuse with the body and its surroundings.

All pieces come in an exclusively designed Cho storage box.



PLAQUE EARRINGS





PLAQUE EARRINGS



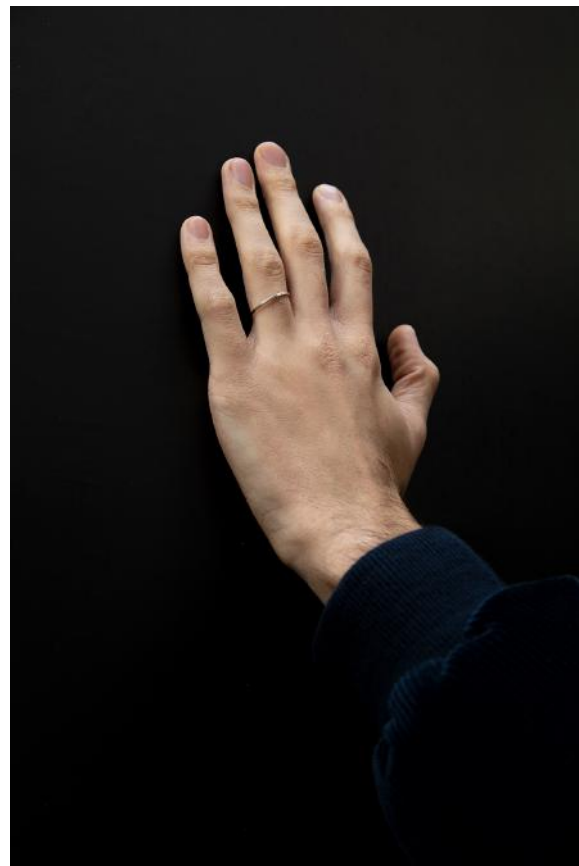
Extra large and Thin Line Ring fusing with the lights of
Le Corbusier's Villa Savoye.



LINE RINGS



Unisex Rings captured by Nina Linnemann.

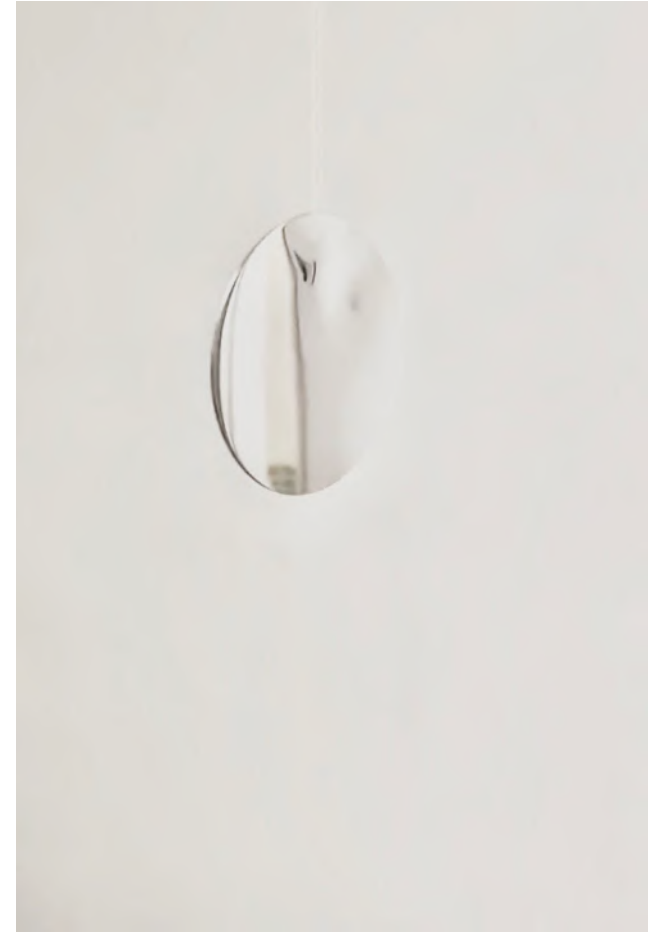


RINGS





Large and mini circle earring captured in Habonim Beach, Israel.



CIRCLE EARRINGS



Cho jewels are conceived to fused with the surroundings.
Circle earrings captured on Matinloc Island, Philippines.

Distinctly light-reflective.
WBC Worldboxing champion Tina Rupprecht wears the large circle earring.



CIRCLE EARRINGS

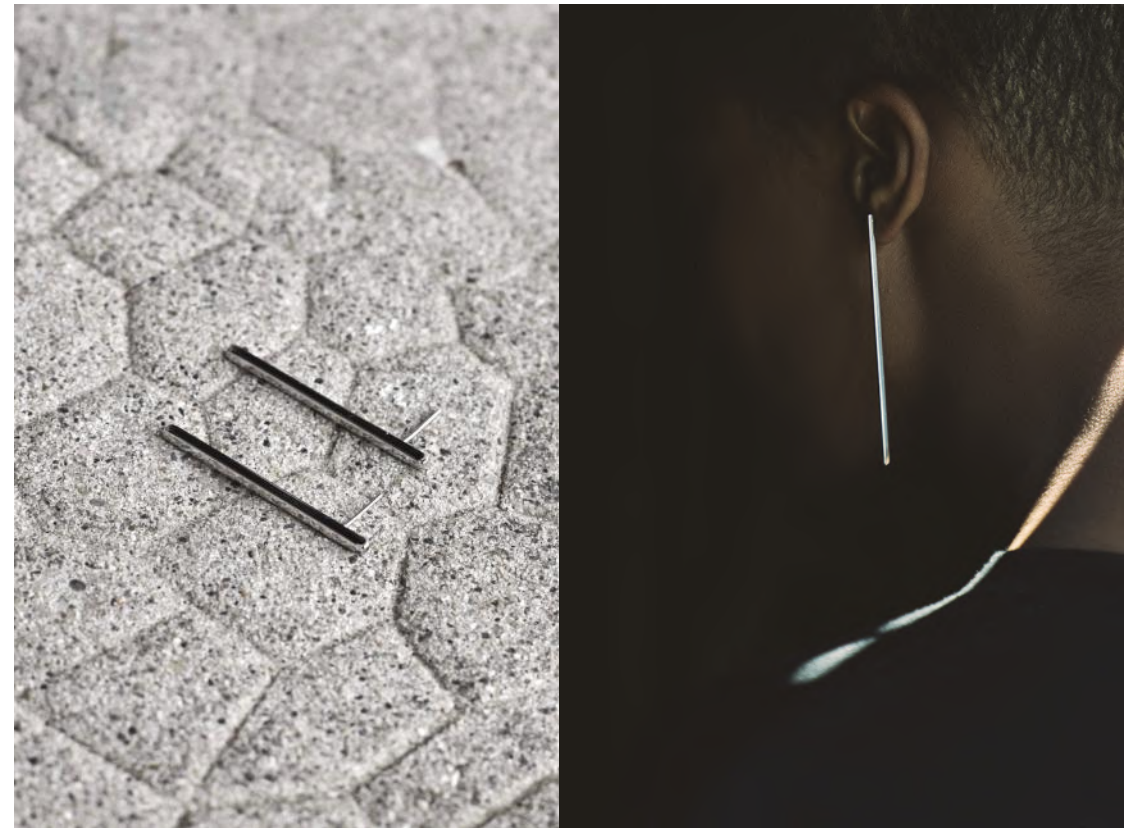


Just like the colour of our eyes, the mirror polished circle ear studs adapt to the incidence of the light.

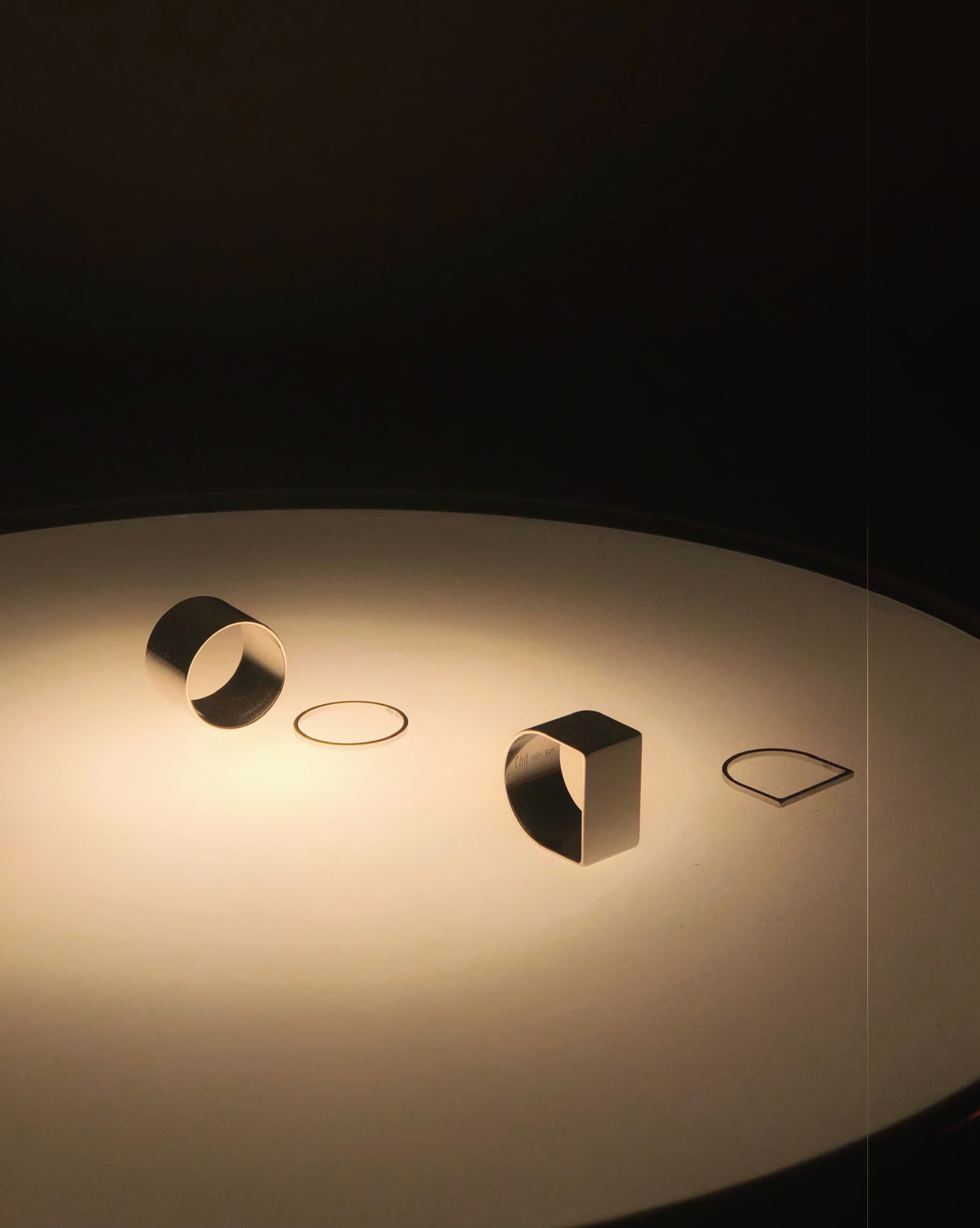


Wearing comfort is guaranteed through the ultra thin and supremely lightweight design of all Cho earrings.

3 sizes of Line Bar earrings to underline a daily outfit effortlessly.



LINE BAR EARRINGS



CATALOG



EXTRA LARGE CIRCLE RING unisex

Clean and overstated lines form a large band of silver with a mirror polished rhodium finish.

Dimensions 16mm
Weight 7.6g

Material Sterling Silver 925 Rhodium-plated, Fairtrade certified and partially recycled
Surface mirror polished

Size
54 | 3770020340031
56 | 3770020340024
58 | 3770020340017
62 | 3770020340000

150€

UNISEX RINGS

Radiate effortless elegance every day with our 4 classical rings, crafted from partly recycled Fairtrade Silver in France and plated with Rhodium. We translated the key shapes line and circles into 2 thin and 2 large Cho rings.

While the circle rings are mirror polished, the line rings come with a matt-satin finishing. To be worn individually or stacked.

CHO SIZE FINGER CIRCUMFERENCE (mm)	INSIDE DIAMETER (mm)
50	ø15.90
52	ø16.50
54	ø17.15
56	ø17.80
58	ø18.45
60	ø19.10
62	ø19.70



EXTRA LARGE LINE RING unisex

Extra large ring in a linear shape made from matte polished silver.

Dimensions 18 x 12 mm
Weight 6.25g

Material Sterling Silver 925 Rhodium-plated Fairtrade certified and partially recycled
Surface matte polished

Size
54 | 3770020340079
56 | 3770020340062
58 | 3770020340055
60 | 3770020340048

170€



THIN CIRCLE RING unisex

A delicate classic in high polished silver.

Dimensions 1.2mm

Weight 0.5g

Material Sterling Silver 925 Rhodium-plated
Fairtrade certified and partially recycled

Surface mirror polished

Size

52 | 3770020340109

54 | 3770020340093

58 | 3770020340086

70€



THIN LINE RING unisex

A clean line of light for every day.

Dimensions 16mm

Weight 0.6g

Material Sterling Silver 925 Rhodium-plated
Fairtrade certified and partially recycled

Surface matt polished

Size

50 | 3770020340147

52 | 3770020340130

54 | 3770020340123

58 | 3770020340116

90€



LARGE CIRCLE EARRING single
3770020340215

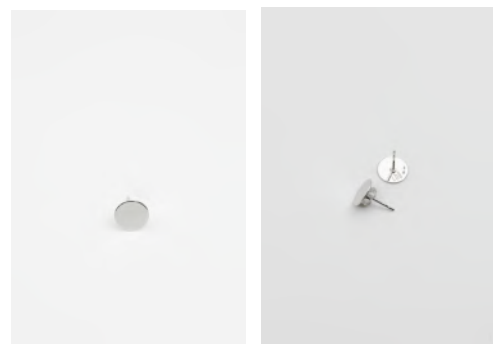
Dimensions Ø45 mm
Weight 7.11 g

120€

MINI CIRCLE EARRING single
3770020340185

Dimensions Ø8 mm
Weight 0.2 g

40€



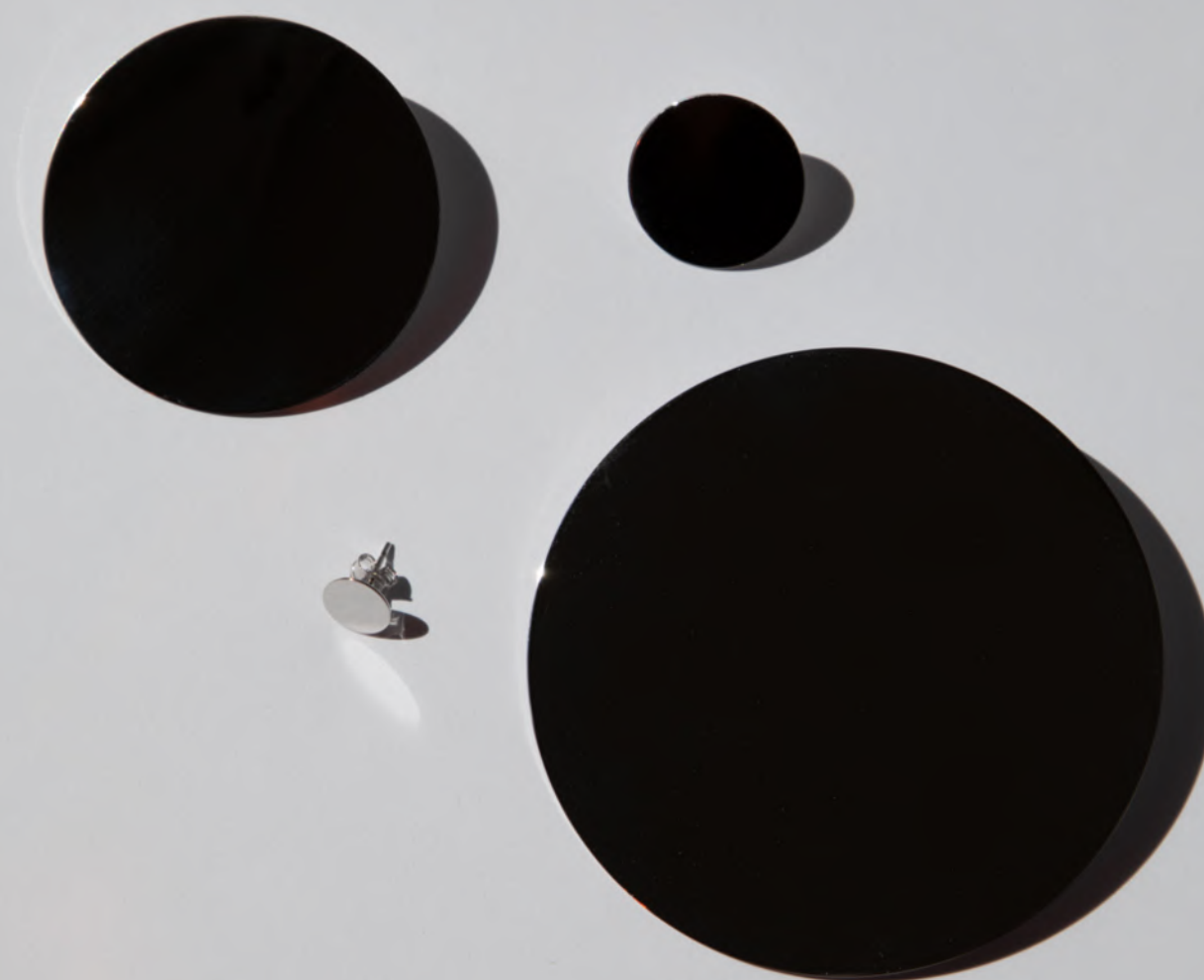
CIRCLE EARRINGS

single

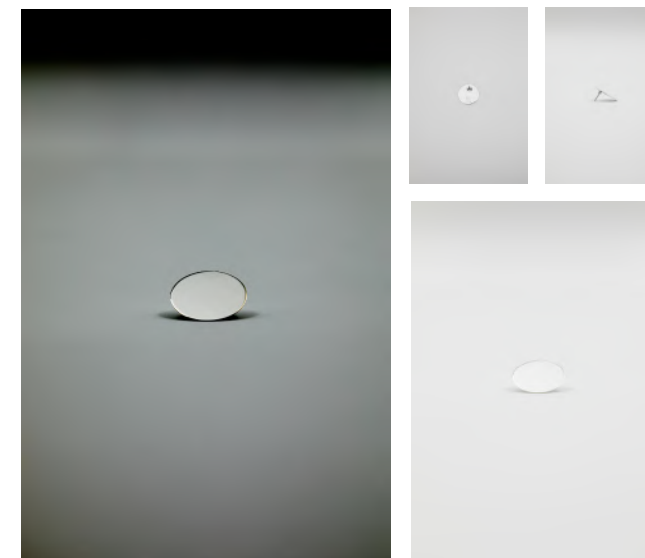
Reflect the light
through the captivating mirror-reflective surface
of the round Cho Essential earrings.

The supremely lightweight circle ear studs
are designed in 4 different sizes:
mini ø8mm, small ø20mm,
arge ø40mm and extra large ø70.

Wearable as single piece
or composed to a symmetrical duo or mismatching pair.



Material Sterling Silver 925 Rhodium Plating
Material Thickness 0.43 mm
Surface handffinished with a mirror polishing
Type Stud earrings for pierced ears
Closure Push-back



SMALL CIRCLE EARRING single
3770020340215

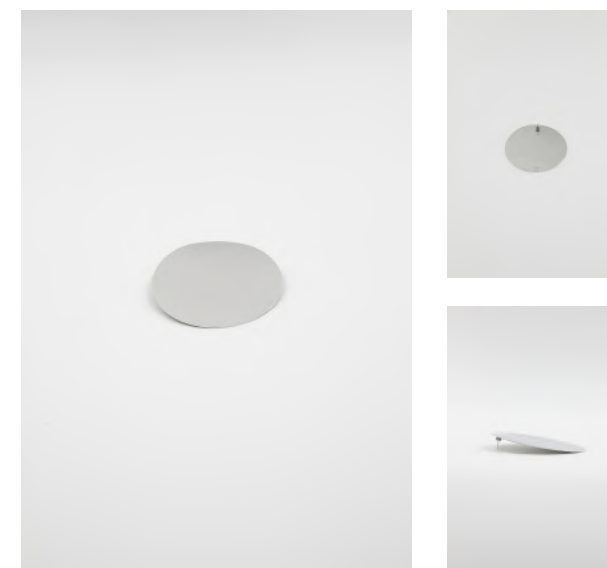
Dimensions Ø20 mm
Weight 1.4g

60€

EXTRA LARGE CIRCLE EARRING single
3770020340239

Dimensions Ø70 mm
Weight 12.6 g

210€



CIRCLE EARRINGS

compositions

MINI CIRCLE EARRINGS Pair
3770020340178

Dimensions Ø8 mm
Weight 0.5 g each

80€



SMALL CIRCLE EARRINGS Pair
3770020340161

Dimensions Ø20 mm
Weight 1.4g each

120€



LARGE CIRCLE EARRINGS Pair
3770020340222

Dimensions Ø45 mm
Weight 7.1 g each

240€



SMALL CIRCLE Asymmetrical Pair
3770020340161

Dimensions Ø20 x Ø8 mm
Weight 1.4 x 0.5 g

100€



LARGE CIRCLE Asymmetrical Pair
3770020340154

Dimensions Ø45 x Ø8 mm
Weight 7.1 x 0.5 g

160€



MEDIUM CIRCLE Asymmetrical Pair

Dimensions Ø45 x Ø20 mm
Weight 7.1 x 1.4 g

180€



PLAQUE

EARRINGS

Supremely lightweight, the large outstanding ear pieces in a rectangular shape are conceived for ultimate wearing comfort.

Simple, yet considered, the Cho Plaque ear studs come in a distinctive surface polish.
In our ateliers in France, we handfinished the long Plaque earring with both, a matt-polish and a mirror-polishing, and the short Plaque earring with a matt finishing of the same surface.



LONG PLAQUE single
3770020340352

Dimensions 80 x 20 mm
Weight 7.2g

Material Sterling Silver
925 Rhodium-plated
Fairtrade certified and
partially recycled

110€

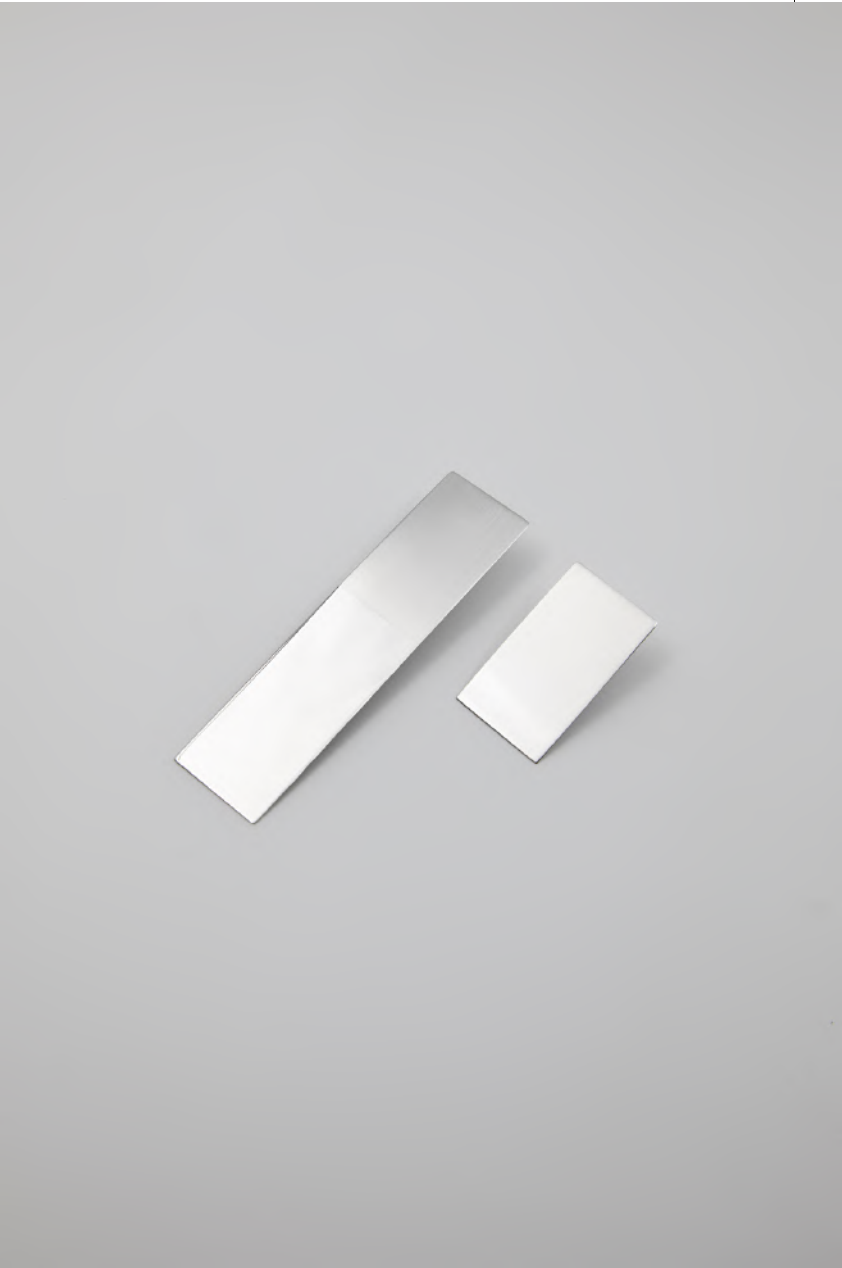


LONG PLAQUE Pair
3770020340352

Dimensions 80 x 20 mm
Weight 7.2g each

Material Sterling Silver
925 Rhodium-plated
Fairtrade certified and
partially recycled

220€



Material Sterling Silver 925 Rhodium Plating
Material Thickness 0.43 mm
Surface handffinished with a mirror and matte polishing
Type Stud earrings for pierced ears
Closure Push-back

PLAQUE Asymmetrical Pair
3770020340314

Dimensions 80 x 20 mm | 35 x 20 mm
Weight 7.2 x 3.1g

190€

SHORT PLAQUE Pair
3770020340321

Dimensions 35 x 20 mm
Weight 3.1g each

140€



SHORT PLAQUE single
3770020340338

Dimensions 80 x 20 mm
Weight 3.1g

70€

SHORT PLAQUE
back



SHORT PLAQUE
side



LONG PLAQUE
side



LONG PLAQUE
back

LINE BAR EARRINGS

Thin line bar studes accentuate your uniqueness.
Elegant Cho Line bar ear studs in 3 different lengths: short, long, extra long.

LONG LINE BAR Pair
3770020340277

Dimensions 85 x 2 x 2 mm
Weight 3.5g each

140€

SHORT LINE BAR Pair
3770020340253

Dimensions 35 x 2 x 2 mm
Weight 1.5g each

100€

SHORT LINE BAR single
3770020340260

Dimensions 35 x 2 x 2 mm
Weight 3.1g

70€

EXTRA LONG LINE BAR single
3770020340307

Dimensions 100 x 2 x 2 mm
Weight 4.1g

110€

Material Sterling Silver 925 Rhodium Plating
Surface handffinished with a mirror polishing
Type Stud earrings for pierced ears
Closure Push-back

MODEL

Lucas Tourlier
Andréa Malange
Mounir Belhidaoui
Dimitri Le Rouzo
Célia Pichon
Gabrièle Raygade
Pauline Miocec
Tina Rupprecht
Maxime Bentegeat
Rémy Ros
Esther Konan
Lucile Hossepied
Shade Affogbolo

IMAGE

Nina Linnemann
Tanja Cho
Clapesque
Anastasia Rokhlenko

AD, TEXT AND GRAPHIC

Tanja Cho

**CONTACT**

CHO KONZEPT
81 BOULEVARD VOLTAIRE
75011 PARIS
FRANCE

www.chokonzept.com

hello@chokonzept.com
[@chokonzept](https://www.instagram.com/chokonzept)

Press inquiries to press@chokonzept.com

CHO

www.chokonzept.com